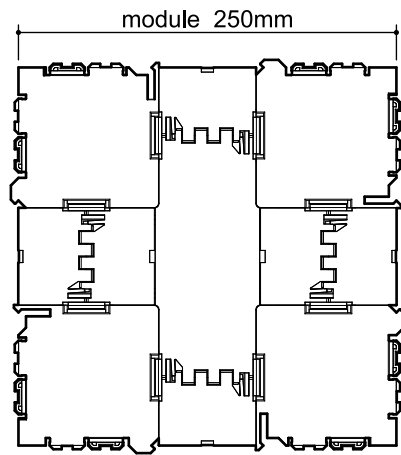
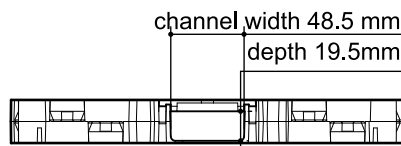


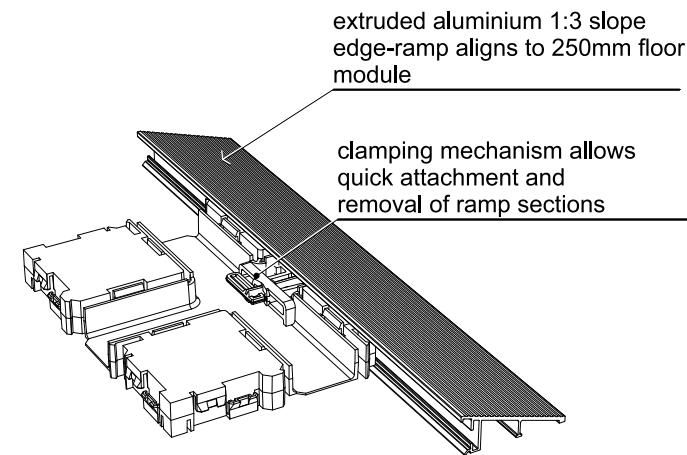
## Technical details



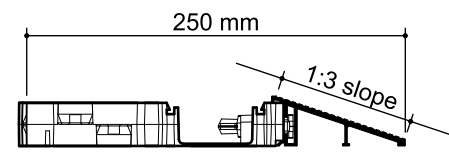
tile - top view



tile - side view



modular edge-ramp



ramp cross-section

## Dimensions and load performance

Tile module	250mm x 250mm
tile height	28.5mm
cable channels	48.5mm width x 19.5mm depth
System weight	less than 10kg per sq.m.
Load capacity	conforms to Building Code of Australia (concentrated live load capacity 6.7kN on 0.01 sq.m.)

System options flame-retardant grades available to specific order.

Ramp kits are available for slopes of 1:3 (extruded aluminium) and 1:10, 1:14 and 1:20 (structural ply).

Facia plates are available in black or white powder-coat. Other colours are available to specific order.

## Installation guidelines

Qik-Link cableway flooring is supplied to site in pre-assembled panels. Standard sizes are 1m x 1m and 750mm x 1m. Other configurations are available to order.

The Qik-Link system can be installed directly over concrete, timber deck and other substrates. For compressible substrates such as carpet it is desirable to pre-sheet the area with a rigid underlay.

### Office Floor

In general the substrate must be clean, dry and free of loose material and contaminants. The surface should be smooth and level to requirements of specifications for carpet.

The system should be bonded to the substrate with pressure sensitive adhesive.

### Exhibition Floor

Qik-Link is ideal for short-term and removable installations such as exhibition floors space and temporary facilities, and can be loose-laid for removal and re-use.

### Clauses for specification

Access flooring system shall be 'Qik-Link' modular floor panelling 28.5mm height and incorporating cable channels 48.5mm width x 19.5mm height at 250mm centres along and across the floor; and compliant to live loading requirements of Building Code of Australia.

**Qik-Link** Distributed by:

**TITAN ACCESS FLOORS (AUST) PTY LTD**

Ph: 9706 5222 Fax: 9706 4443

Email: titanfloors@optusnet.com.au

www.titanaccessfloors.net

Information in this document is correct at time of publication, but may change due to product evolution.

The technology incorporated in the Qik-Link system is the subject of pending international patent applications.

© August 2015



**Qik-Link**  
modular floor systems

Low height modular floor panel with fully accessible cableway matrix enables swift and simple connection of power and communications services

**Technical datasheet**



# Qik-Link

is a modular, ultra-low profile, access flooring system that allows fast and easy connection of power and communications wiring across the entire floor space

The building block of the Qik-Link system is a modular 250mm x 250mm x 28.5mm tile that interlocks with adjoining tiles to form a continuous floordeck. Qik-Link is supplied in pre-assembled panels for ease of shipping, storage and installation.

The speed and simplicity of Qik-Link installation greatly reduces on-site labour costs and eliminates the need for specialist flooring installers, and the easy accessibility of the cableway system reduces time and cost of electrical trades.

As an added benefit, Qik-Link allows speedy and non-intrusive future changes to floor layout and cabling services.

**Channel-covers:** comprise segmented strips that peel out to provide quick access to the cable channel network. Rotating the end-plates out of the floor displaces the hold-down clips and unlocks the channel-cover, which then unzips from the base

**Hold-down clips:** lock the channel-cover strips into the tile module

**Base:** has cable channels running lengthways and crossways through the body. These are accessible from above via removal of the channel-covers.

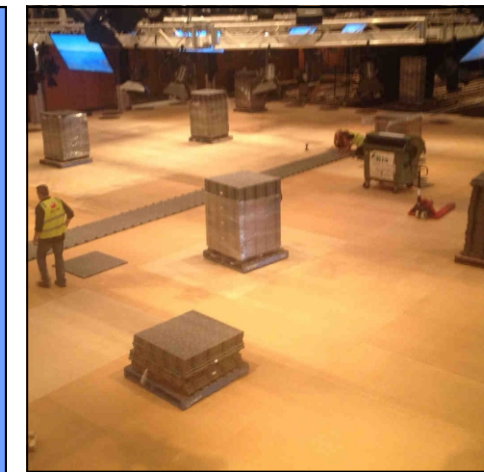
**Connecting clips:** engage with corresponding sockets in abutting tiles to link the floor sheet together. When the channel-cover end-plates are rotated into the closed position the clips are locked in place.

**Levelling clips:** engage with abutting tiles to prevent lipping between adjacent decks

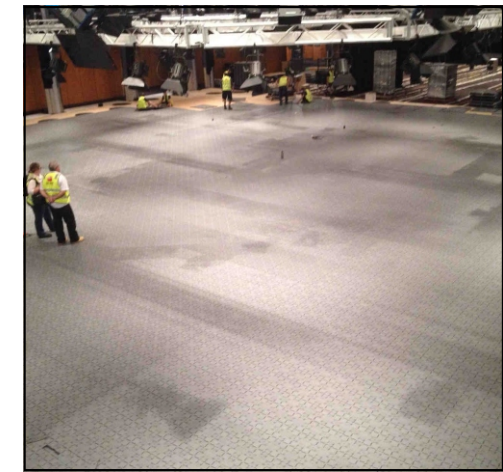
## Quick to install

Qik-Link is shipped in pre-assembled panels, typically 750mm width or 1m width, that are quickly linked together on site.

In the installation shown here an 8-man crew laid an area of 700 square metres in 2 hours.



Installation commences with positioning of set-out rows



Two hours later - 700 sq.m. installed

## Integrated finishes and fittings

The floor accepts a wide variety of finishes including broadloom carpet, vinyl or rubber sheet, as well as modular carpet or vinyl tiles.

**Accessories** include a modular 1:3 slope extruded aluminium edge ramp and a range of fascia panels that are easily attached and removed from the floor.

**Ramp kits** are available with slopes of 1:10, 1:14 and 1:20. Other slopes are available to specific order

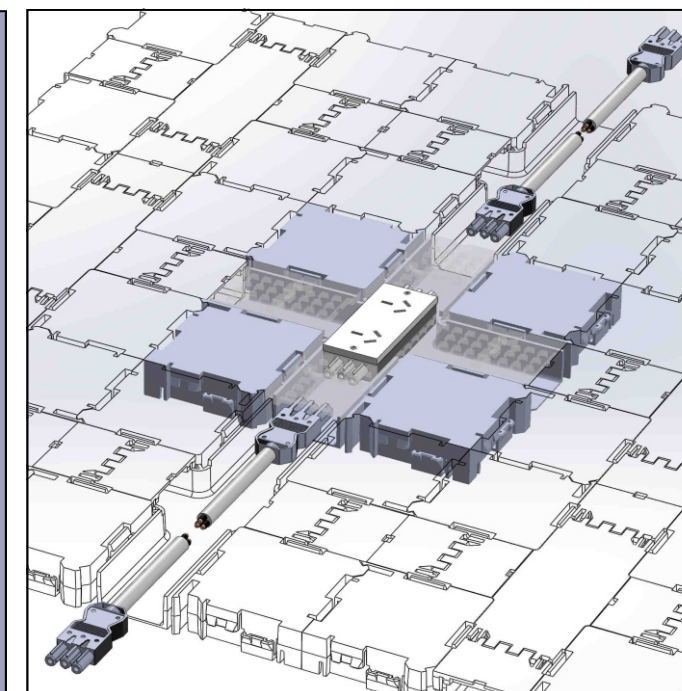


Access to cable channels is simple and straight forward

## Integrated soft-wiring

Qik-Link incorporates a range of Wieland-compatible modular soft-wiring components to facilitate the rapid connection of power across the floor deck.

The system is compatible with an extensive range of data connectors and fittings.



Qik-Link easily meets the loading requirements of the Building Code of Australia, and can carry rolling loads including forklifts and scissor-lifts.